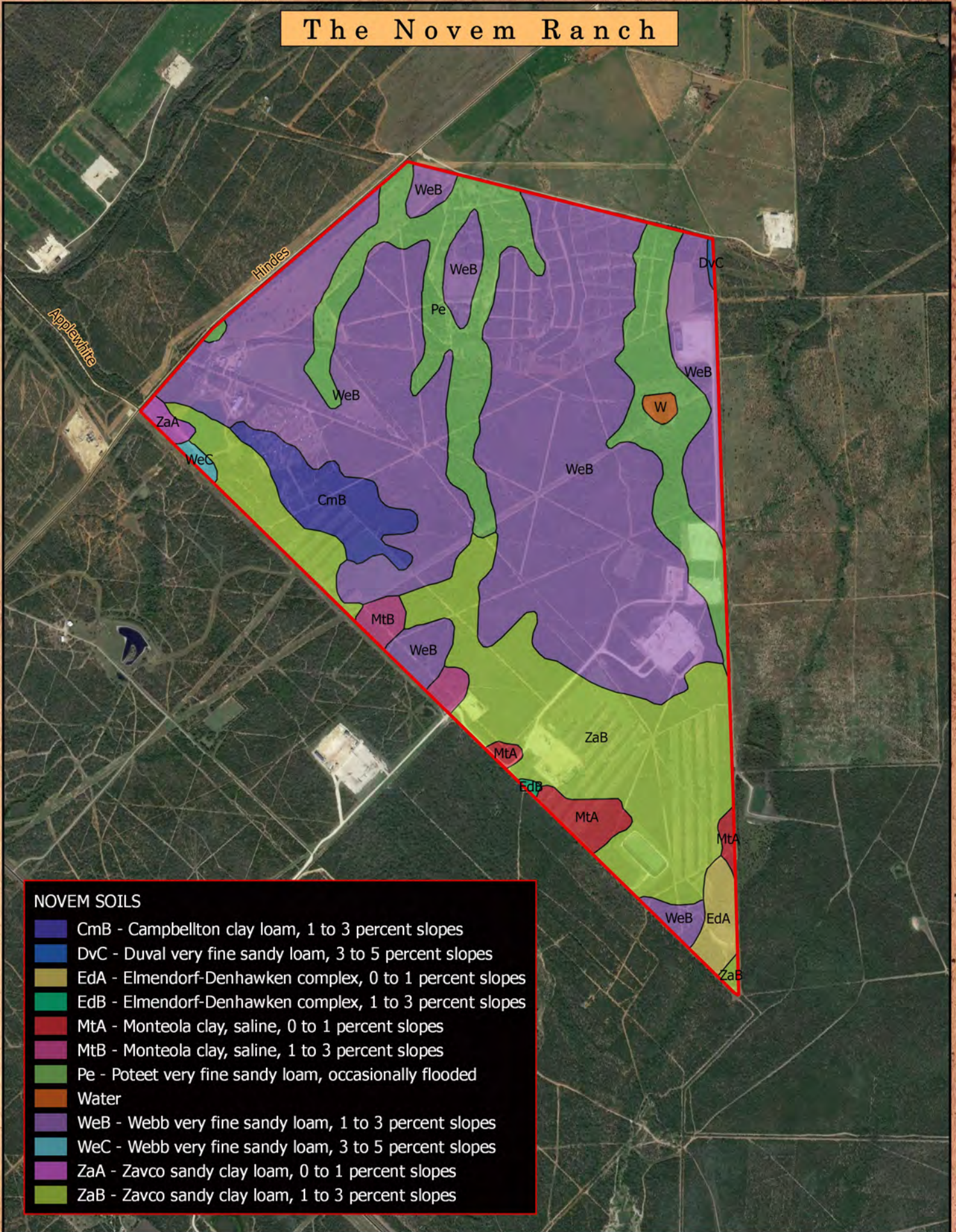


# The Novem Ranch



## NOVEM SOILS

- CmB - Campbellton clay loam, 1 to 3 percent slopes
- DvC - Duval very fine sandy loam, 3 to 5 percent slopes
- EdA - Elmendorf-Denhawken complex, 0 to 1 percent slopes
- EdB - Elmendorf-Denhawken complex, 1 to 3 percent slopes
- MtA - Monteola clay, saline, 0 to 1 percent slopes
- MtB - Monteola clay, saline, 1 to 3 percent slopes
- Pe - Poteet very fine sandy loam, occasionally flooded
- Water
- WeB - Webb very fine sandy loam, 1 to 3 percent slopes
- WeC - Webb very fine sandy loam, 3 to 5 percent slopes
- ZaA - Zavco sandy clay loam, 0 to 1 percent slopes
- ZaB - Zavco sandy clay loam, 1 to 3 percent slopes



Map holds no warranties express or implied

0 0.1 0.2 0.3 0.4 0.5 Miles

~ 1000 acres  
FRIO COUNTY, TEXAS  
Stephen Stransky  
210-254-7700