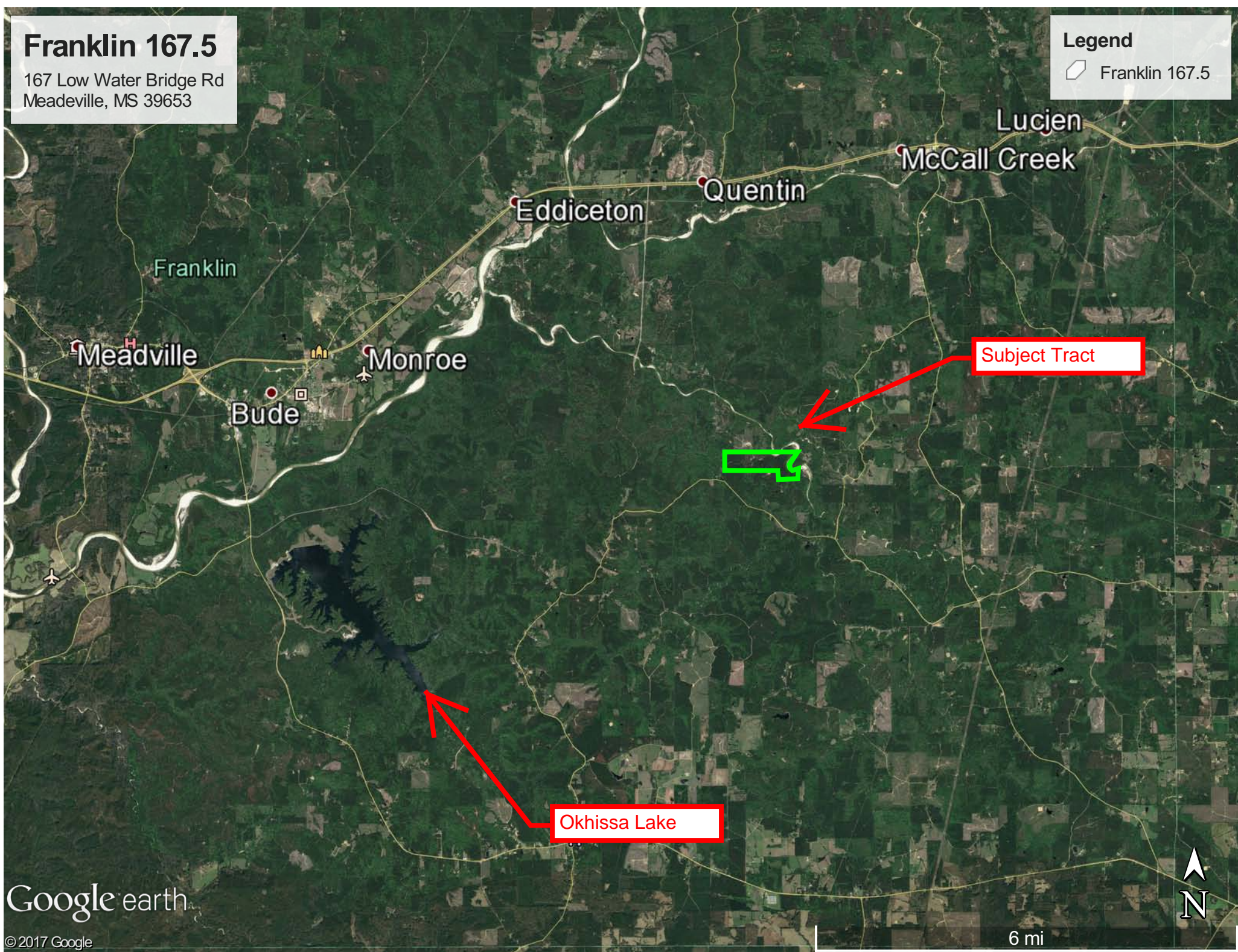


Franklin 167.5

167 Low Water Bridge Rd
Meadeville, MS 39653

Legend
□ Franklin 167.5



Franklin 167.5

3000 ft on McGehee Creek

Legend

- Amite 37
- Coles

Seller will
subdivide

Homochitto
National Forest
Lands



A parcel of land being a part of the NE 1/4 of Section 31, and part of the N1/2 of the NW 1/4, NW 1/4 of the NE 1/4, and the N 1/2 of the SW 1/4 of the NE 1/4 of Section 32, Township 6 North, Range 5 East, Franklin County, Mississippi, and being more particularly described as follows: Beginning at a found 1/2" rebar marking the NW corner of said Section 32; thence along an established blue painted line S89° 34' 33"E 660.03 feet to a found 1/2" rebar; thence along an established blue painted line S89° 17' 10"E 1295.88 feet to a set 1/2" rebar on bank of Magee's Creek; thence S89° 17' 10"E 2013.48 feet to a point in the centerline of Magee's Creek; thence along said centerline these following courses: S36° 16' 14"W 231.92 feet; thence S59° 57' 34"W 378.77 feet; thence S42° 41' 08"W 381.04 feet; thence S13° 15' 59"W 355.23 feet; thence S27° 25' 35"E 213.36 feet; thence S64° 17' 52"E 281.60 feet; thence leaving said creek N89° 20' 32"E 675.55 feet to a set 1/2" rebar; thence S00° 22' 21"E 580.90 feet to a found 1/2" rebar; thence along an established blue painted line N00° 22' 21"W 580.90 feet to a found concrete monument marking the NW corner of the SW 1/4 of the NE 1/4 of said Section 32; thence along an established blue painted line N00° 22' 21"W 580.90 feet to a found concrete monument marking the SW corner of the NW 1/4 of said Section 32; thence along an established blue painted line N89° 00' 07"W 1460.64 feet to a set 1/2" rebar; thence along an established blue painted line N00° 38' 14"W 1247.73 feet to a set 1/2" rebar; thence along an established blue painted line N88° 56' 47"E 1332.16 feet back to the Point of Beginning, the Area being 167.528 Acres, more or less. Bearings shown are referenced to a true meridian as determined by G. P. S. observation (RTK Solution).

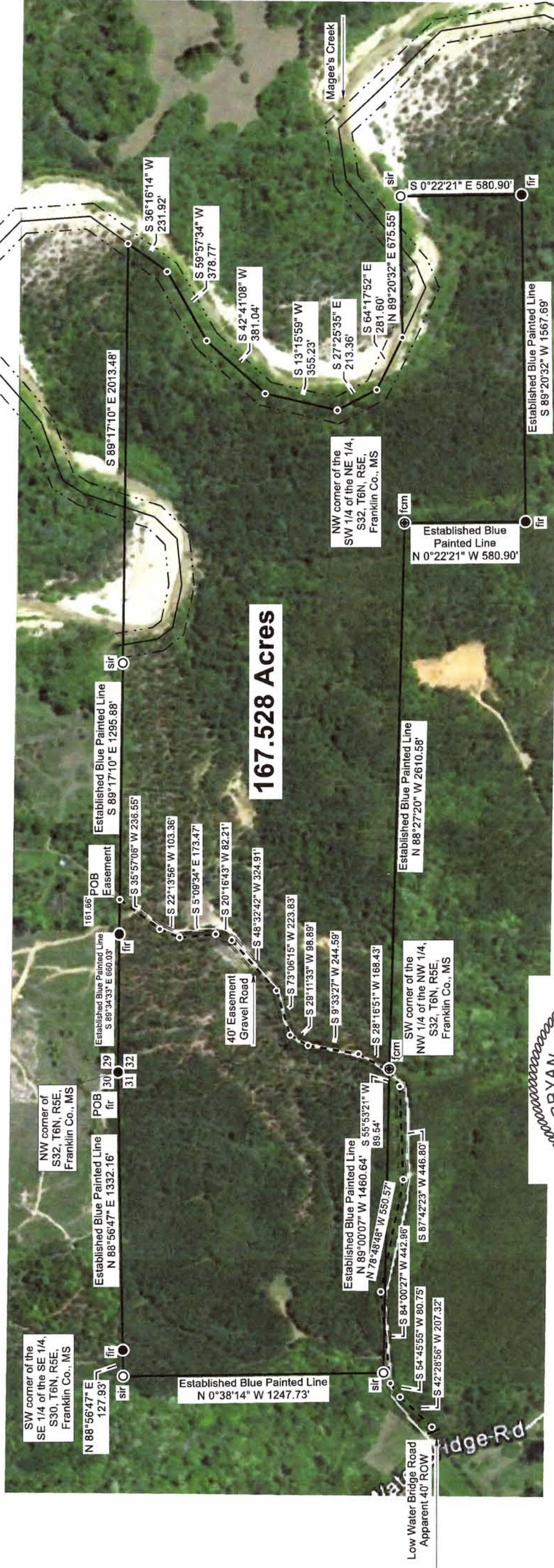
Note: This survey does not constitute a title search. There may be other documents of record that may affect the property.

40' Easement Description

A 40' wide right-of-way, the centerline being more particularly described as follows: Commence at a found 1/2" rebar marking the NW corner of Section 32, Township 6 North, Range 5 East, Franklin County, Mississippi; thence S89° 34' 33"E 660.03 feet to a found 1/2" rebar; thence S89° 17' 10"E 161.66 feet to a point in the centerline of a gravel road for the Point of Beginning; thence along the centerline these following courses: S35° 57' 06"W 236.55 feet; thence S22° 13' 56"W 103.36 feet; thence S20° 16' 43"W 82.21 feet; thence S48° 32' 42"W 324.91 feet; thence S73° 06' 15"W 223.83 feet; thence S29° 11' 33"W 98.89 feet; thence S09° 33' 27"W 244.59 feet; thence S42° 28' 56"W 207.32 feet to a point of the East margin of Low Water Bridge, a Public Paved Road, for the Point of Terminus, being a part of the NW 1/4 of Section 32, Township 6 North, Range 5 East, Franklin County, Mississippi.



G. P. S. Geodetic
Class D Survey



167.528 Acres

LEGEND	
○	Set 1/2" Rebar
●	Found 1/2" Rebar
⊙	Found Concrete Monument
- - -	Gravel Road



Amacker Surveying, LLC
41 Meadow Hill, Poplarville, MS 39470
601-550-0050 601-795-2996
bryanamacker@gmail.com

A Survey for Joe McNeil					
SCALE	500 Ft/In	DATE	11/19/2016	DRAWN BY	TA
JOB	16-151	Reference:	GLO Records: DB L-12, p 673; DB L-13, p 48; DB Q-13, p 292		

This map drawn with TRAVERSE PC, Software